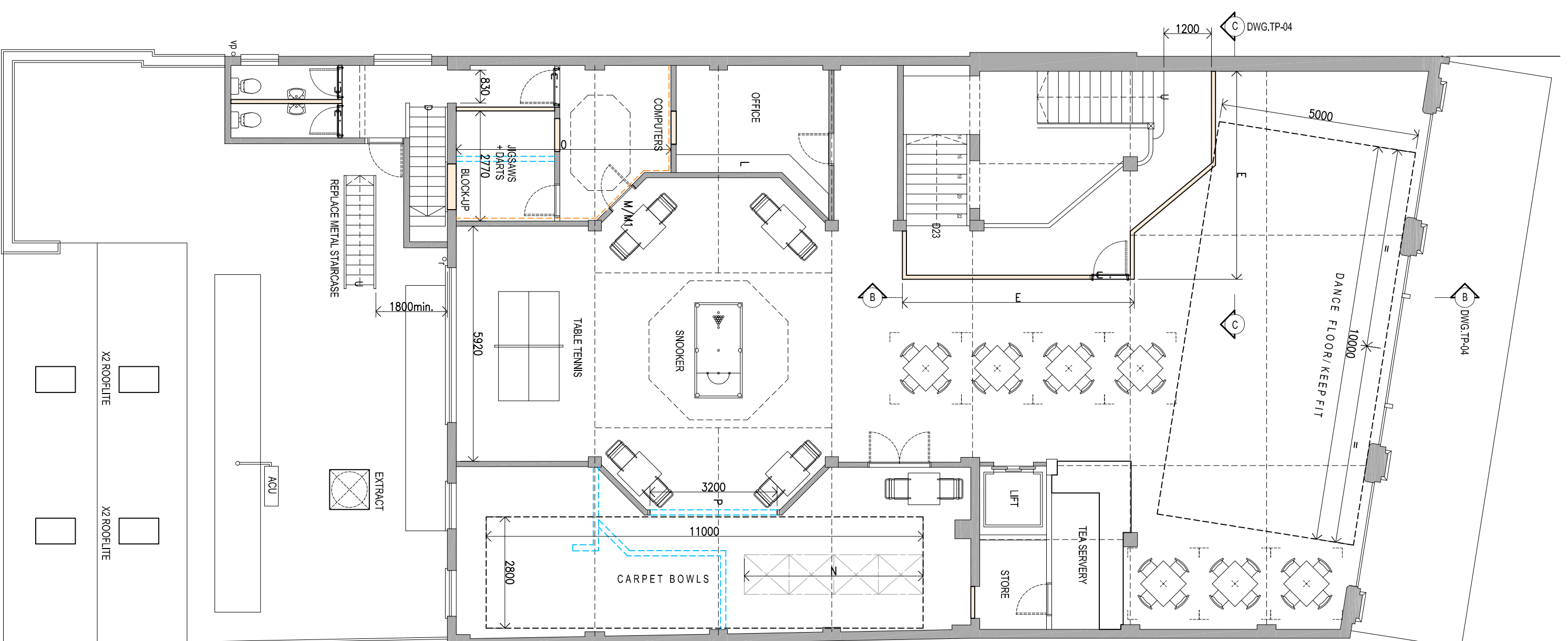
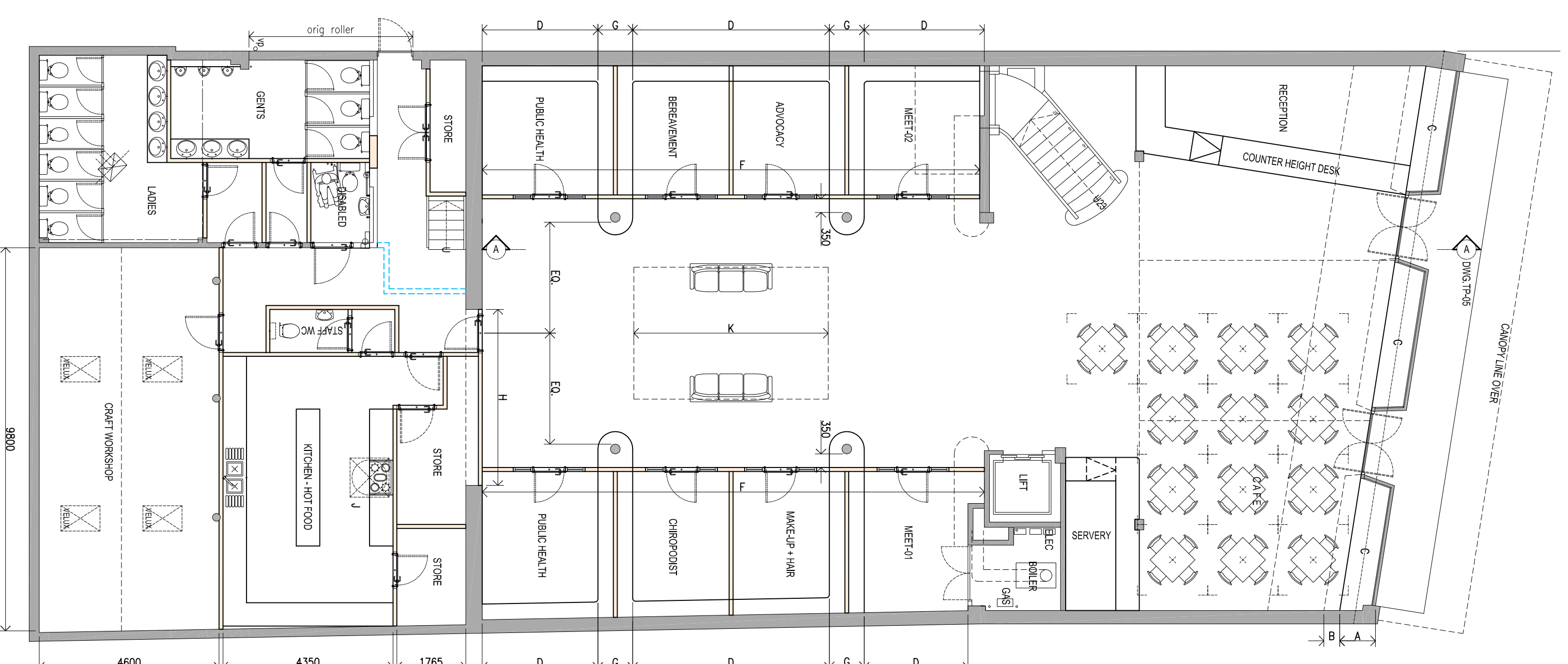


SECOND FLOOR PLAN



FIRST FLOOR PLAN



GROUND FLOOR PLAN

- KEY - GROUND FLOOR**
- A RETAIN EXISTING SHOPFRONT
 - B REMOVE 1800mm DISPLAY FITTINGS
 - C RETAIN RETAIL DISPLAY
 - D RETAIN INCORPORATE WALL SHELVING
 - E FINE RESISTING GLASS SCREEN
 - F GLAZED WALL DIVIDER - SEE DETAIL ON DWG.
 - G RETAIN ART DECO STYLE ISLAND DISPLAY
 - H INFL. EXISTING ARCH WITH DOORSET LOCATED CENTRAL
 - J CEILING EXTRACT FAN
 - K RETAIN EXISTING SHOP SHELVING
 - L FORM NEW DOOR OPENING
 - M REMOVE AND RE-USE EXISTING DOOR
 - N RETAIN EXISTING INLAY GLASS BLOCK FLOORING
 - O LAYER FOAM PROTECTIVE CARPET BELOW BOWLS MATT
 - P 1 LAYER FIBRELINE PLASTER BOARD FOR 30MINUTE FIRE PROTECTION
 - Q RETAIN CORNICE PROFILES ABOVE 2.40M HIGH
 - R STUDYWORK-PLASTERBOARD PARTITION PAINTED
 - R REMOVE EXISTING DOOR LEAF AND SET-aside FOR FUTURE RE-USE

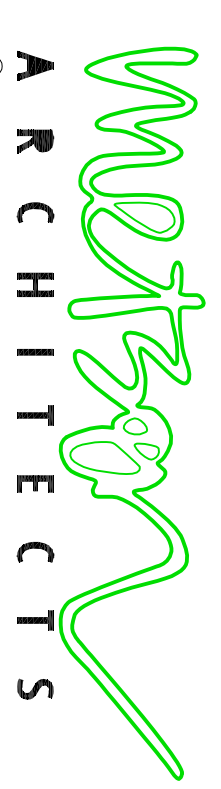
- KEY - CONSTRUCTION**
- EXISTING BUILDING FABRIC
 - PROPOSED NEW LIGHTWEIGHT STUD WALL-PLASTER FINISH
 - DEMOLITION
 - UPGRADE WALL LINING FOR 30MINUTE FIRE RESISTANCE

REV. D 25-04-18 LPA REQUESTS
 REV. C 19-02-18 LPA REQUESTS
 REV. B 19-02-18 LPA REQUESTS
 REV. A 19-01-18 LPA REQUESTS

TOWN PLANNING

1:100 scale
 METRES

PROPOSED FLOOR PLANS



STUDIO 1
 LEIGH PARK ROAD LEIGH ON SEA ESSEX SS9 2DU
 01702 472714
 www.westcliffarchitects.co.uk
 admin@westcliffarchitects.co.uk

SCALE: Q/A1
 DATE: NOV-2017
 CLIENT: AGE CONCERN
 JOB: 138-140 HAMLET COURT ROAD, WESTCLIFF SS9 7LN

DWG NO. 1719-TP-01-D